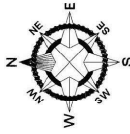


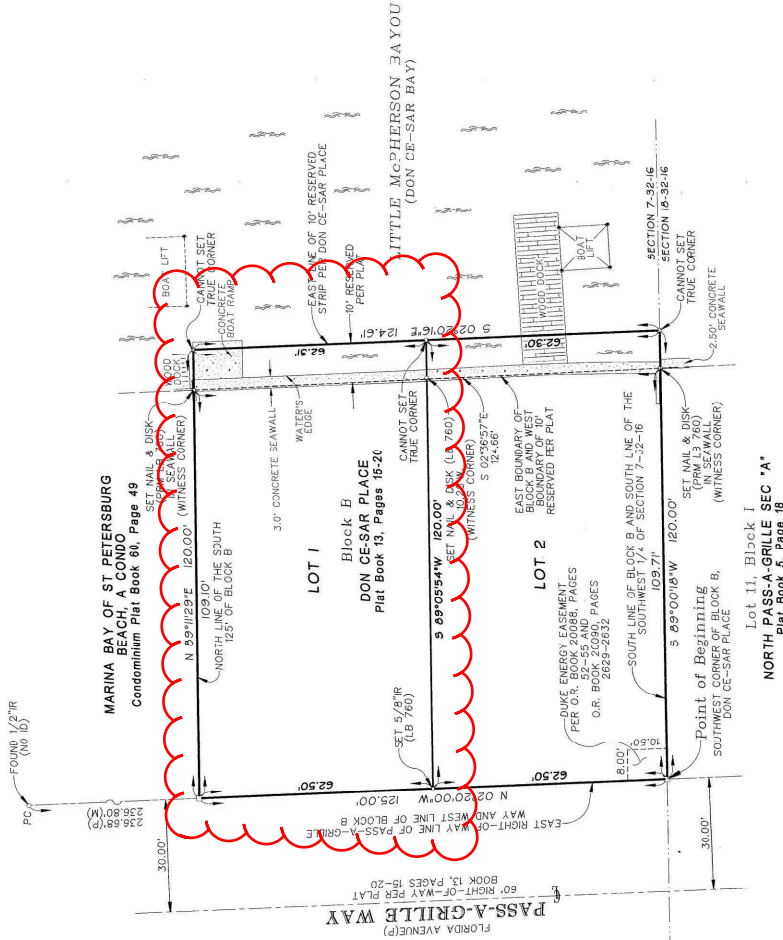
SUBDIVISION PLAT
PLAT BOOK: 145, PAGE: 78



JOHN HORRELL

BEING A REPLAT OF THE SOUTH 125 FEET OF BLOCK B AND ADJACENT 10 FOOT RESERVED STRIP LYING ON THE EAST, DON CE-SAR PLACE, ACCORDING TO THE PLAT THEREOF AS RECORDED IN PLAT BOOK 13, PAGES 15 THROUGH 20 OF THE PUBLIC RECORDS OF PINELLAS COUNTY, FLORIDA
LYING IN THE SOUTHWEST 1/4 OF SECTION 7, TOWNSHIP 32 SOUTH, RANGE 16 EAST
CITY OF ST. PETE BEACH, FLORIDA

3101 Pass-A-Grille Way, Lot 1, St. Pete Beach, Florida 33706



EASEMENT NOTE:
S14 DUKE ENERGY EASEMENT RECORDED IN OFFICIAL RECORDS BOOK 18942, PAGE 844 WAS REPLACED BY A DUKE ENERGY EASEMENT CONTAINING A REVISED EASEMENT AREA RECORDED IN OFFICIAL RECORDS BOOK 20086, PAGE 52 AND OFFICIAL RECORDS BOOK 20090, PAGE 2629, ALL OF THE PUBLIC RECORDS OF PINELLAS COUNTY, FLORIDA.

SURVEYOR'S REPORT:
1) BEARINGS ARE BASED ON THE EAST RIGHT-OF-WAY LINE OF PASS-A-GRILLE WAY AS BEING N 02° 20' 00" W, PER PLAT OF DON CE-SAR PLACE.
2) NOTICE: THIS PLAT, AS RECORDED IN ITS GRAPHIC FORM, IS THE OFFICIAL DESCRIPTION OF THE SUBDIVIDED LANDS DESCRIBED HEREIN AND WILL IN NO CIRCUMSTANCES BE SUPPLANTED IN AUTHORITY BY ANY OTHER GRAPHIC OR DIGITAL FORM OF THE PLAT. THERE MAY BE ADDITIONAL RESTRICTIONS THAT ARE NOT RECORDED ON THIS PLAT THAT MAY BE FOUND IN THE PUBLIC RECORDS OF THIS COUNTY.
3) ALL PLATTED UTILITY EASEMENTS SHALL PROVIDE THAT SUCH EASEMENTS SHALL ALSO BE EASEMENTS FOR THE CONSTRUCTION, INSTALLATION, MAINTENANCE, AND OPERATION OF CABLE TELEVISION SERVICES; PROVIDED, HOWEVER, NO SUCH CONSTRUCTION, INSTALLATION, MAINTENANCE, AND OPERATION OF CABLE TELEVISION SERVICES SHALL INTERFERE WITH THE FACILITIES AND SERVICES OF ANY ELECTRIC, TELEPHONE, GAS, OR OTHER PUBLIC UTILITY. THE PUBLIC UTILITY, IT SHALL BE SOLELY RESPONSIBLE FOR THE DAMAGES THIS SECTION SHALL NOT APPLY TO THOSE PRIVATE EASEMENTS GRANTED TO OR OBTAINED BY A PARTICULAR ELECTRIC, TELEPHONE, GAS, OR OTHER PUBLIC UTILITY, SUCH CONSTRUCTION, INSTALLATION, MAINTENANCE, AND OPERATION SHALL BE SUBJECT TO THE ELECTRICAL SAFETY CODE AS ADOPTED BY THE FLORIDA PUBLIC SERVICE COMMISSION.

BOUNDARY CORNER SYMBOL LEGEND AND NOTES:
□ = DENOTES SET 4"x4" CONCRETE MONUMENT STAMPED "FRM LB 760", UNLESS OTHERWISE INDICATED.
INTERIOR LOT CORNERS WERE SET IN FIELD ON 11/05/2020.

JOHN C. BRENDLA AND ASSOCIATES, INC.
Professional Land Surveyors and Mappers
JCB
4015 82nd Avenue North
Pinellas Park, Florida 33781
Phone: (727) 577-5932
Facsimile: (727) 577-5932
"OVER HALF A CENTURY OF QUALITY LAND SURVEYING"